

## GATA-5 Polyclonal Antibody

<b>Catalog No :</b>	YT1864
<b>Reactivity :</b>	Human;Mouse
<b>Applications :</b>	WB;IHC;IF;ELISA
<b>Target :</b>	GATA-5
<b>Gene Name :</b>	GATA5
<b>Protein Name :</b>	Transcription factor GATA-5
<b>Human Gene Id :</b>	140628
<b>Human Swiss Prot No :</b>	Q9BWX5
<b>Mouse Gene Id :</b>	14464
<b>Mouse Swiss Prot No :</b>	P97489
<b>Immunogen :</b>	The antiserum was produced against synthesized peptide derived from human GATA-5. AA range:244-293
<b>Specificity :</b>	GATA-5 Polyclonal Antibody detects endogenous levels of GATA-5 protein.
<b>Formulation :</b>	Liquid in PBS containing 50% glycerol, 0.5% BSA and 0.02% sodium azide.
<b>Source :</b>	Polyclonal, Rabbit,IgG
<b>Dilution :</b>	WB 1:500 - 1:2000. IHC 1:100 - 1:300. ELISA: 1:10000.. IF 1:50-200
<b>Purification :</b>	The antibody was affinity-purified from rabbit antiserum by affinity-chromatography using epitope-specific immunogen.
<b>Concentration :</b>	1 mg/ml
<b>Storage Stability :</b>	-15°C to -25°C/1 year(Do not lower than -25°C)

**Observed Band :** 45kD

**Background :** The protein encoded by this gene is a transcription factor that contains two GATA-type zinc fingers. The encoded protein is known to bind to hepatocyte nuclear factor-1alpha (HNF-1alpha), and this interaction is essential for cooperative activation of the intestinal lactase-phlorizin hydrolase promoter. In other organisms, similar proteins may be involved in the establishment of cardiac smooth muscle cell diversity. [provided by RefSeq, Jul 2008],

**Function :** function: Binds to the functionally important CEF-1 nuclear protein binding site in the cardiac-specific slow/cardiac troponin C transcriptional enhancer. May play an important role in the transcriptional program(s) that underlies smooth muscle cell diversity., similarity: Contains 2 GATA-type zinc fingers.,

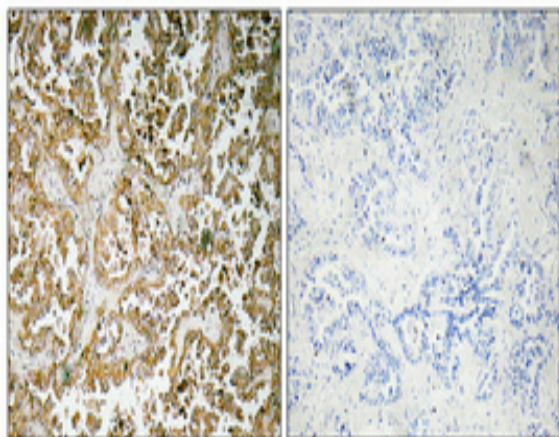
**Subcellular Location :** Nucleus .

**Expression :** Uterus,

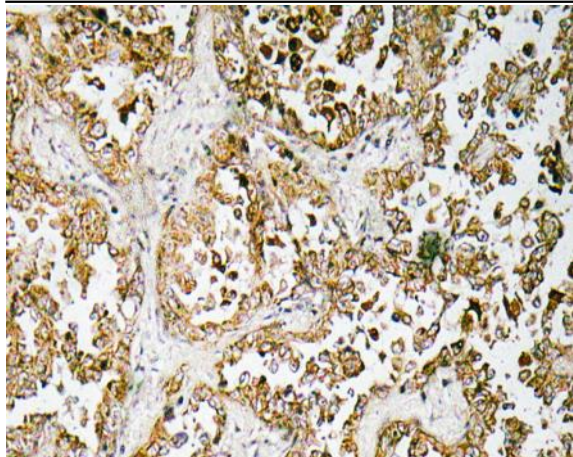
**Sort :** 6490

**No4 :** 1

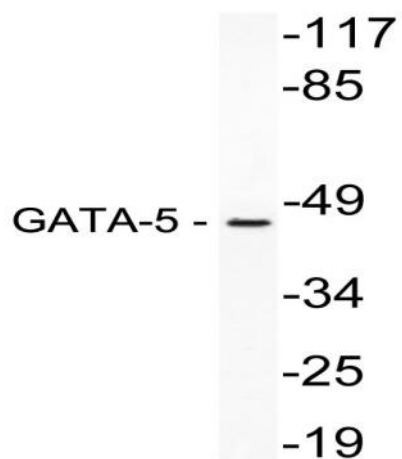
## Products Images



Immunohistochemical analysis of paraffin-embedded Human lung cancer. Antibody was diluted at 1:100 (4° overnight). High-pressure and temperature Tris-EDTA, pH 8.0 was used for antigen retrieval. Negative control (right) obtained from antibody was pre-absorbed by immunogen peptide.



Immunohistochemistry analysis of GATA-5 antibody in paraffin-embedded human lung carcinoma tissue.



Western blot analysis of lysate from NIH/3T3 cells, using GATA-5 antibody.