

## EphA2/3/4 Polyclonal Antibody

<b>Catalog No :</b>	YT1576
<b>Reactivity :</b>	Human;Rat
<b>Applications :</b>	WB;IF;ELISA
<b>Target :</b>	EphA2/3/4
<b>Fields :</b>	>>MAPK signaling pathway;>>Ras signaling pathway;>>Rap1 signaling pathway;>>PI3K-Akt signaling pathway;>>Axon guidance
<b>Gene Name :</b>	EPHA2/3/4
<b>Protein Name :</b>	Ephrin type-A receptor 2/3/4
<b>Human Gene Id :</b>	1969/2042/2043
<b>Human Swiss Prot No :</b>	P29317/P29320/P54764
<b>Rat Gene Id :</b>	29210
<b>Rat Swiss Prot No :</b>	O08680
<b>Immunogen :</b>	The antiserum was produced against synthesized peptide derived from human EPHA2/3/4. AA range:556-605
<b>Specificity :</b>	EphA2/3/4 Polyclonal Antibody detects endogenous levels of EphA2/3/4 protein.
<b>Formulation :</b>	Liquid in PBS containing 50% glycerol, 0.5% BSA and 0.02% sodium azide.
<b>Source :</b>	Polyclonal, Rabbit,IgG
<b>Dilution :</b>	WB 1:500 - 1:2000. IF 1:200 - 1:1000. ELISA: 1:40000. Not yet tested in other applications.
<b>Purification :</b>	The antibody was affinity-purified from rabbit antiserum by affinity-chromatography using epitope-specific immunogen.

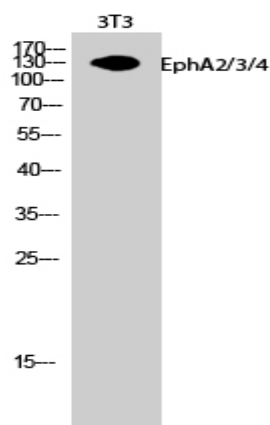
<b>Concentration :</b>	1 mg/ml
<b>Storage Stability :</b>	-15°C to -25°C/1 year(Do not lower than -25°C)
<b>Observed Band :</b>	130kD
<b>Cell Pathway :</b>	Axon guidance;
<b>Background :</b>	<p>This gene belongs to the ephrin receptor subfamily of the protein-tyrosine kinase family. EPH and EPH-related receptors have been implicated in mediating developmental events, particularly in the nervous system. Receptors in the EPH subfamily typically have a single kinase domain and an extracellular region containing a Cys-rich domain and 2 fibronectin type III repeats. The ephrin receptors are divided into 2 groups based on the similarity of their extracellular domain sequences and their affinities for binding ephrin-A and ephrin-B ligands. This gene encodes a protein that binds ephrin-A ligands. Mutations in this gene are the cause of certain genetically-related cataract disorders.[provided by RefSeq, May 2010],</p>
<b>Function :</b>	<p>catalytic activity:ATP + a [protein]-L-tyrosine = ADP + a [protein]-L-tyrosine phosphate.,function:Receptor for members of the ephrin-A family. Binds to ephrin-A1, -A3, -A4 and -A5.,similarity:Belongs to the protein kinase superfamily. Tyr protein kinase family. Ephrin receptor subfamily.,similarity:Contains 1 protein kinase domain.,similarity:Contains 1 SAM (sterile alpha motif) domain.,similarity:Contains 2 fibronectin type-III domains.,subunit:Interacts with SLA (By similarity). Interacts with INPPL1/SHIP2.,tissue specificity:Expressed most highly in tissues that contain a high proportion of epithelial cells, e.g., skin, intestine, lung, and ovary.,</p>
<b>Subcellular Location :</b>	<p>Cell membrane ; Single-pass type I membrane protein . Cell projection, ruffle membrane ; Single-pass type I membrane protein . Cell projection, lamellipodium membrane ; Single-pass type I membrane protein . Cell junction, focal adhesion . Present at regions of cell-cell contacts but also at the leading edge of migrating cells (PubMed:19573808, PubMed:20861311). Relocates from the plasma membrane to the cytoplasmic and perinuclear regions in cancer cells (PubMed:18794797). .</p>
<b>Expression :</b>	<p>Expressed in brain and glioma tissue and glioma cell lines (at protein level). Expressed most highly in tissues that contain a high proportion of epithelial cells, e.g. skin, intestine, lung, and ovary.</p>
<b>Sort :</b>	5619
<b>No4 :</b>	1

## Products Images

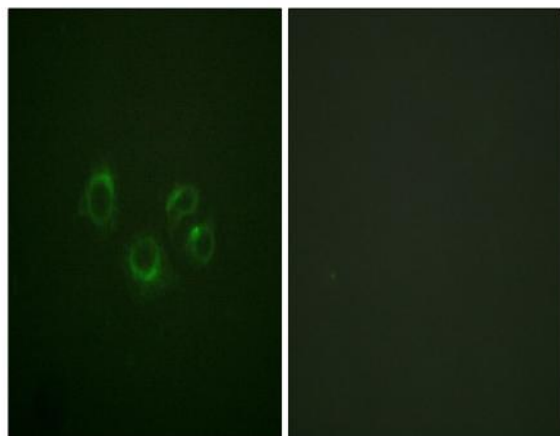
(kD)



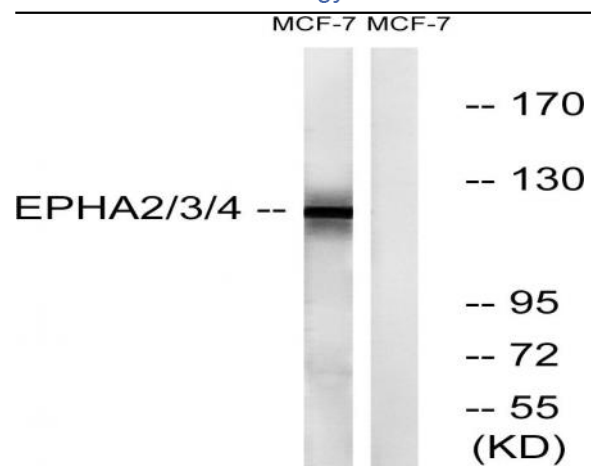
Western Blot analysis of various cells using EphA2/3/4 Polyclonal Antibody



Western Blot analysis of 3T3 cells using EphA2/3/4 Polyclonal Antibody



Immunofluorescence analysis of A549 cells, using EPHA2/3/4 Antibody. The picture on the right is blocked with the synthesized peptide.



Western blot analysis of lysates from MCF-7 cells, using EPHA2/3/4 Antibody. The lane on the right is blocked with the synthesized peptide.