

DDX51 Polyclonal Antibody

Catalog No :	YT1314
Reactivity :	Human;Rat;Mouse;
Applications :	WB;IHC;IF;ELISA
Target :	DDX51
Gene Name :	DDX51
Protein Name :	ATP-dependent RNA helicase DDX51
Human Gene Id :	317781
Human Swiss Prot No :	Q8N8A6
Mouse Swiss Prot No :	Q6P9R1
Immunogen :	The antiserum was produced against synthesized peptide derived from human DDX51. AA range:617-666
Specificity :	DDX51 Polyclonal Antibody detects endogenous levels of DDX51 protein.
Formulation :	Liquid in PBS containing 50% glycerol, 0.5% BSA and 0.02% sodium azide.
Source :	Polyclonal, Rabbit,IgG
Dilution :	WB 1:500 - 1:2000. IHC 1:100 - 1:300. ELISA: 1:40000.. IF 1:50-200
Purification :	The antibody was affinity-purified from rabbit antiserum by affinity-chromatography using epitope-specific immunogen.
Concentration :	1 mg/ml
Storage Stability :	-15°C to -25°C/1 year(Do not lower than -25°C)
Observed Band :	72kD

Background : domain:The Q motif is unique to and characteristic of the DEAD box family of RNA helicases and controls ATP binding and hydrolysis.,function:ATP-binding RNA helicase involved in the biogenesis of 60S ribosomal subunits.,similarity:Belongs to the DEAD box helicase family. DDX51/DBP6 subfamily.,similarity:Contains 1 helicase ATP-binding domain.,similarity:Contains 1 helicase C-terminal domain.,

Function : domain:The Q motif is unique to and characteristic of the DEAD box family of RNA helicases and controls ATP binding and hydrolysis.,function:ATP-binding RNA helicase involved in the biogenesis of 60S ribosomal subunits.,similarity:Belongs to the DEAD box helicase family. DDX51/DBP6 subfamily.,similarity:Contains 1 helicase ATP-binding domain.,similarity:Contains 1 helicase C-terminal domain.,

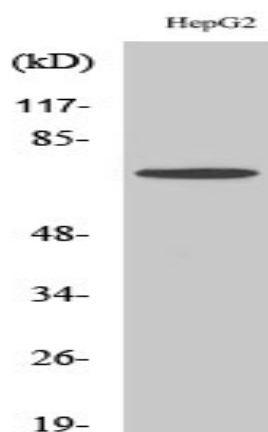
Subcellular Location : Nucleus, nucleolus .

Expression : Brain,Epithelium,Retina,Small intestine,Urinary bladder,

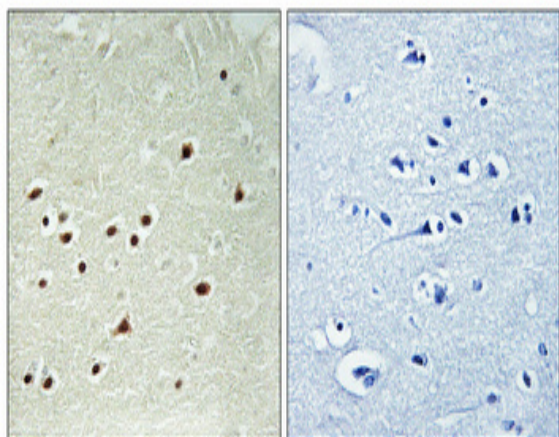
Sort : 5070

No4 : 1

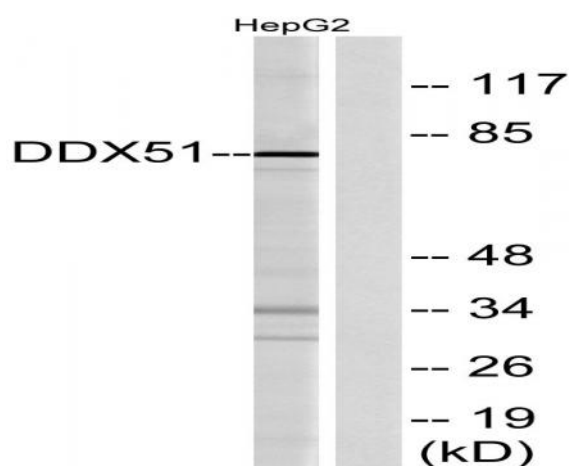
Products Images



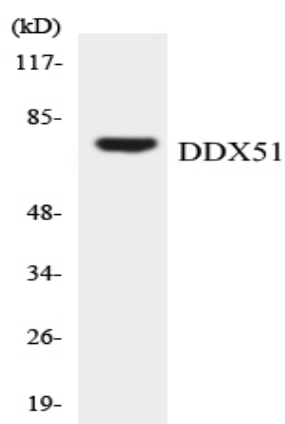
Western Blot analysis of various cells using DDX51 Polyclonal Antibody cells nucleus extracted by Minute TM Cytoplasmic and Nuclear Fractionation kit (SC-003, Inventbiotech, MN, USA).



Immunohistochemical analysis of paraffin-embedded Human brain. Antibody was diluted at 1:100(4° overnight). High-pressure and temperature Tris-EDTA,pH8.0 was used for antigen retrieval. Negative control (right) obtained from antibody was pre-absorbed by immunogen peptide.



Western blot analysis of lysates from HepG2 cells, using DDX51 Antibody. The lane on the right is blocked with the synthesized peptide.



Western blot analysis of the lysates from K562 cells using DDX51 antibody.