

CD38 (ABT-CD38) mouse mAb

Catalog No :	YM6572
Reactivity :	Human
Applications :	IHC;WB;ELISA
Target :	CD38
Fields :	>>Nicotinate and nicotinamide metabolism;>>Metabolic pathways;>>Calcium signaling pathway;>>Hematopoietic cell lineage;>>Oxytocin signaling pathway;>>Salivary secretion;>>Pancreatic secretion
Gene Name :	CD38
Protein Name :	ADP-ribosyl cyclase 1 (EC 3.2.2.5) (Cyclic ADP-ribose hydrolase 1) (cADPr hydrolase 1) (T10) (CD antigen CD38)
Human Gene Id :	952
Human Swiss Prot No :	P28907
Immunogen :	Synthesized peptide derived from human CD38 AA range: 200-300
Specificity :	This antibody detects endogenous levels of human CD38. Heat-induced epitope retrieval (HIER) Citrate buffer of pH6.0 was highly recommended as antigen repair method in paraffin section
Formulation :	Liquid in PBS containing 50% glycerol, 0.5% BSA and 0.02% sodium azide.
Source :	Mouse, Monoclonal/IgG1, Kappa
Dilution :	IHC 1:200-400, WB 1:200-1000, ELISA 1:5000-20000
Purification :	The antibody was affinity-purified from mouse ascites by affinity-chromatography using specific immunogen.
Storage Stability :	-15°C to -25°C/1 year(Do not lower than -25°C)

Molecularweight : 34kD

Background : The protein encoded by this gene is a non-lineage-restricted, type II transmembrane glycoprotein that synthesizes and hydrolyzes cyclic adenosine 5'-diphosphate-ribose, an intracellular calcium ion mobilizing messenger. The release of soluble protein and the ability of membrane-bound protein to become internalized indicate both extracellular and intracellular functions for the protein. This protein has an N-terminal cytoplasmic tail, a single membrane-spanning domain, and a C-terminal extracellular region with four N-glycosylation sites. Crystal structure analysis demonstrates that the functional molecule is a dimer, with the central portion containing the catalytic site. It is used as a prognostic marker for patients with chronic lymphocytic leukemia. Alternative splicing results in multiple transcript variants. [provided by RefSeq, Sep 2015],

Function : catalytic activity:NAD(+) + H(2)O = ADP-ribose + nicotinamide.,developmental stage:Preferentially expressed at both early and late stages of the B and T-cell maturation. It is also detected on erythroid and myeloid progenitors in bone marrow, where the level of surface expression was shown to decrease during differentiation of blast-forming unit E to colony-forming unit E.,enzyme regulation:ATP inhibits the hydrolyzing activity.,function:Synthesizes cyclic ADP-ribose, a second messenger for glucose-induced insulin secretion. Also has cADPr hydrolase activity. Also moonlights as a receptor in cells of the immune system.,online information:CD38 entry,similarity:Belongs to the ADP-ribosyl cyclase family.,tissue specificity:Expressed at high levels in pancreas, liver, kidney, brain, testis, ovary, placenta, malignant lymphoma and neuroblastoma.,

Subcellular Location : Membranous

Expression : Expressed at high levels in pancreas, liver, kidney, brain, testis, ovary, placenta, malignant lymphoma and neuroblastoma.

Tag : hot

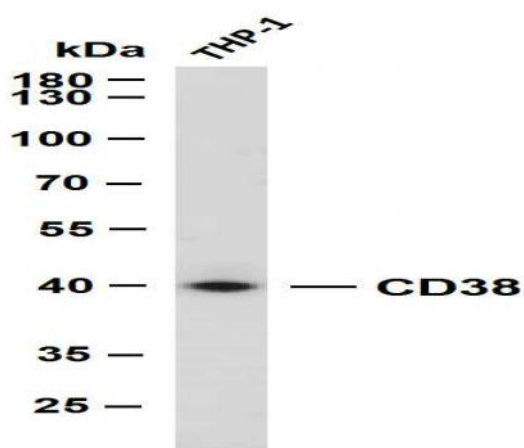
Sort : 3567

Speciality : IHC antibodies

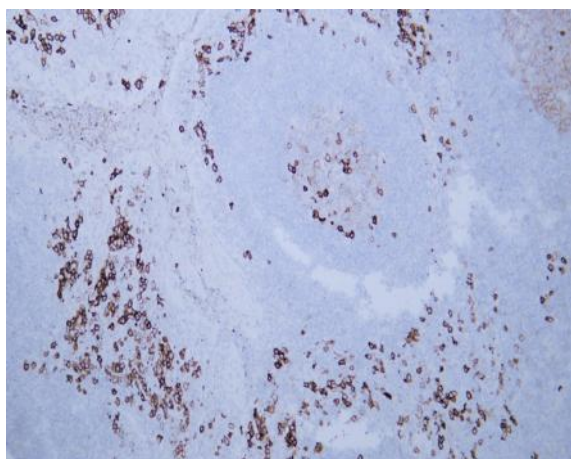
Host : Mouse

Modifications : Unmodified

Products Images



THP-1 whole cell lysates were separated by 10% SDS-PAGE, and the membrane was blotted with anti-CD38(ABT-CD38) antibody. The HRP-conjugated Goat anti-Mouse IgG(H + L) antibody was used to detect the antibody. Lane 1: THP-1
Predicted band size: 34kDa Observed band size: 40kDa



Human tonsil tissue was stained with Anti-CD38 (ABT-CD38) Antibody