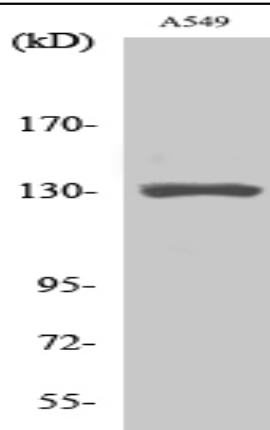


## CRSP130 Polyclonal Antibody

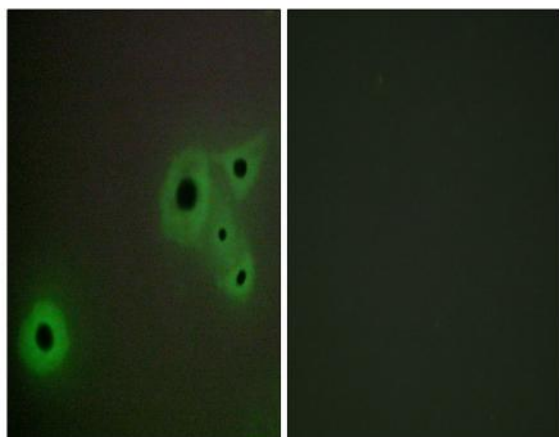
<b>Catalog No :</b>	YT1120
<b>Reactivity :</b>	Human;Mouse;Rat
<b>Applications :</b>	WB;IHC;IF;ELISA
<b>Target :</b>	CRSP130
<b>Gene Name :</b>	MED23
<b>Protein Name :</b>	Mediator of RNA polymerase II transcription subunit 23
<b>Human Gene Id :</b>	9439
<b>Human Swiss Prot No :</b>	Q9ULK4
<b>Mouse Gene Id :</b>	70208
<b>Mouse Swiss Prot No :</b>	Q80YQ2
<b>Rat Swiss Prot No :</b>	Q5EB59
<b>Immunogen :</b>	The antiserum was produced against synthesized peptide derived from human MED23. AA range:1-50
<b>Specificity :</b>	CRSP130 Polyclonal Antibody detects endogenous levels of CRSP130 protein.
<b>Formulation :</b>	Liquid in PBS containing 50% glycerol, 0.5% BSA and 0.02% sodium azide.
<b>Source :</b>	Polyclonal, Rabbit,IgG
<b>Dilution :</b>	WB 1:500 - 1:2000. IHC 1:100 - 1:300. IF 1:200 - 1:1000. ELISA: 1:5000. Not yet tested in other applications.
<b>Purification :</b>	The antibody was affinity-purified from rabbit antiserum by affinity-chromatography using epitope-specific immunogen.
<b>Concentration :</b>	1 mg/ml

<b>Storage Stability :</b>	-15°C to -25°C/1 year(Do not lower than -25°C)
<b>Observed Band :</b>	150kD
<b>Background :</b>	<p>The activation of gene transcription is a multistep process that is triggered by factors that recognize transcriptional enhancer sites in DNA. These factors work with co-activators to direct transcriptional initiation by the RNA polymerase II apparatus. The protein encoded by this gene is a subunit of the CRSP (cofactor required for SP1 activation) complex, which, along with TFIID, is required for efficient activation by SP1. This protein is also a component of other multisubunit complexes e.g. thyroid hormone receptor-(TR-) associated proteins which interact with TR and facilitate TR function on DNA templates in conjunction with initiation factors and cofactors. This protein also acts as a metastasis suppressor. Several alternatively spliced transcript variants encoding different isoforms have been described for this gene. [provided by RefSeq, Jul 2012],</p>
<b>Function :</b>	<p>alternative products:Experimental confirmation may be lacking for some isoforms,function:Required for transcriptional activation subsequent to the assembly of the preinitiation complex (By similarity). Component of the Mediator complex, a coactivator involved in the regulated transcription of nearly all RNA polymerase II-dependent genes. Mediator functions as a bridge to convey information from gene-specific regulatory proteins to the basal RNA polymerase II transcription machinery. Mediator is recruited to promoters by direct interactions with regulatory proteins and serves as a scaffold for the assembly of a functional preinitiation complex with RNA polymerase II and the general transcription factors. Required for transcriptional activation by adenovirus E1A protein. Required for ELK1-dependent transcriptional activation in response to activated Ras signaling.,similarity:Belongs to the</p>
<b>Subcellular Location :</b>	Nucleus .
<b>Expression :</b>	Brain,Cervix carcinoma,Placenta,Prostate,Testis,
<b>Sort :</b>	4592
<b>No4 :</b>	1

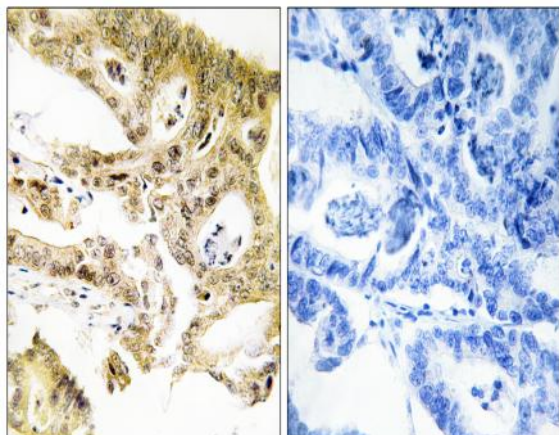
## Products Images



Western Blot analysis of various cells using CRSP130 Polyclonal Antibody cells nucleus extracted by Minute TM Cytoplasmic and Nuclear Fractionation kit (SC-003, Inventbiotech, MN, USA).



Immunofluorescence analysis of A549 cells, using MED23 Antibody. The picture on the right is blocked with the synthesized peptide.



Immunohistochemistry analysis of paraffin-embedded human colon carcinoma tissue, using MED23 Antibody. The picture on the right is blocked with the synthesized peptide.