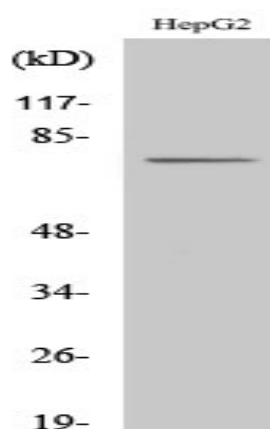


## CLIP4 Polyclonal Antibody

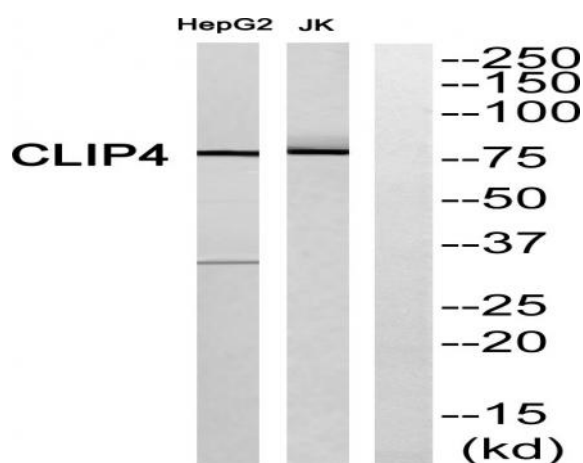
<b>Catalog No :</b>	YT0970
<b>Reactivity :</b>	Human;Rat;Mouse;
<b>Applications :</b>	WB;ELISA
<b>Target :</b>	CLIP4
<b>Gene Name :</b>	CLIP4
<b>Protein Name :</b>	CAP-Gly domain-containing linker protein 4
<b>Human Gene Id :</b>	79745
<b>Human Swiss Prot No :</b>	Q8N3C7
<b>Mouse Swiss Prot No :</b>	Q8CI96
<b>Immunogen :</b>	The antiserum was produced against synthesized peptide derived from human CLIP4. AA range:321-370
<b>Specificity :</b>	CLIP4 Polyclonal Antibody detects endogenous levels of CLIP4 protein.
<b>Formulation :</b>	Liquid in PBS containing 50% glycerol, 0.5% BSA and 0.02% sodium azide.
<b>Source :</b>	Polyclonal, Rabbit,IgG
<b>Dilution :</b>	WB 1:500 - 1:2000. ELISA: 1:40000. Not yet tested in other applications.
<b>Purification :</b>	The antibody was affinity-purified from rabbit antiserum by affinity-chromatography using epitope-specific immunogen.
<b>Concentration :</b>	1 mg/ml
<b>Storage Stability :</b>	-15°C to -25°C/1 year(Do not lower than -25°C)
<b>Observed Band :</b>	76kD

<b>Cell Pathway :</b>	Regulation of Microtubule Dynamics
<b>Background :</b>	similarity:Contains 3 ANK repeats.,similarity:Contains 3 CAP-Gly domains.,
<b>Function :</b>	similarity:Contains 3 ANK repeats.,similarity:Contains 3 CAP-Gly domains.,
<b>Subcellular Location :</b>	integral component of membrane,
<b>Expression :</b>	Amygdala,Brain,Lung,Prostate,Testis,
<b>Sort :</b>	4286
<b>No4 :</b>	1

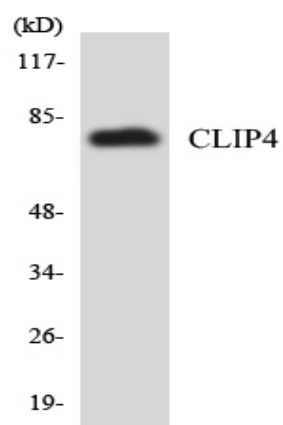
## Products Images



Western blot analysis of various cells using CLIP4 Polyclonal Antibody



Western blot analysis of CLIP4 Antibody. The lane on the right is blocked with the CLIP4 peptide.



Western blot analysis of the lysates from HUVECcells using CLIP4 antibody.