

Cks2 Polyclonal Antibody

Catalog No :	YT0940
Reactivity :	Human;Mouse
Applications :	IHC;IF;ELISA
Target :	Cks2
Fields :	>>Pathways in cancer;>>Small cell lung cancer
Gene Name :	CKS2
Protein Name :	Cyclin-dependent kinases regulatory subunit 2
Human Gene Id :	1164
Human Swiss Prot No :	P33552
Mouse Gene Id :	66197
Mouse Swiss Prot No :	P56390
Immunogen :	The antiserum was produced against synthesized peptide derived from human CKS2. AA range:1-50
Specificity :	Cks2 Polyclonal Antibody detects endogenous levels of Cks2 protein.
Formulation :	Liquid in PBS containing 50% glycerol, 0.5% BSA and 0.02% sodium azide.
Source :	Polyclonal, Rabbit,IgG
Dilution :	IHC 1:100 - 1:300. ELISA: 1:20000.. IF 1:50-200
Purification :	The antibody was affinity-purified from rabbit antiserum by affinity-chromatography using epitope-specific immunogen.
Concentration :	1 mg/ml

Storage Stability : -15°C to -25°C/1 year (Do not lower than -25°C)

Molecularweight : 10kD

Background : CDC28 protein kinase regulatory subunit 2 (CKS2) Homo sapiens CKS2 protein binds to the catalytic subunit of the cyclin dependent kinases and is essential for their biological function. The CKS2 mRNA is found to be expressed in different patterns through the cell cycle in HeLa cells, which reflects specialized role for the encoded protein. [provided by RefSeq, Jul 2008],

Function : function: Binds to the catalytic subunit of the cyclin dependent kinases and is essential for their biological function., similarity: Belongs to the CKS family., subunit: Forms an homohexamer that can probably bind six kinase subunits.,

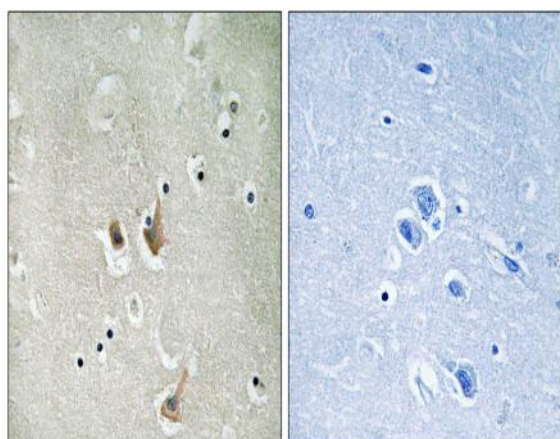
Subcellular Location : cyclin-dependent protein kinase holoenzyme complex, SCF ubiquitin ligase complex,

Expression : Lung,

Sort : 4074

No4 : 1

Products Images



Immunohistochemistry analysis of paraffin-embedded human brain tissue, using CKS2 Antibody. The picture on the right is blocked with the synthesized peptide.