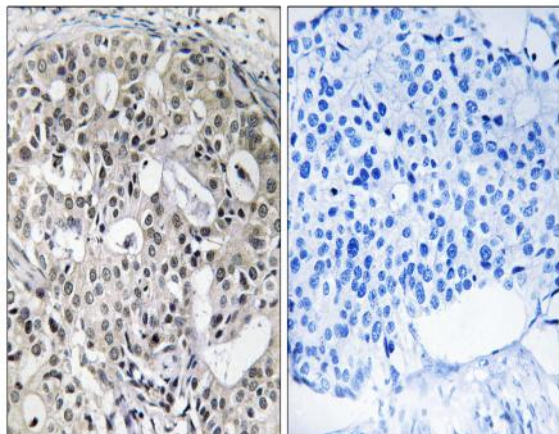


CNTD2 Polyclonal Antibody

Catalog No :	YT1005
Reactivity :	Human;Rat;Mouse;
Applications :	IHC;IF;ELISA
Target :	CNTD2
Gene Name :	CNTD2
Protein Name :	Cyclin N-terminal domain-containing protein 2
Human Gene Id :	79935
Human Swiss Prot No :	Q9H8S5
Immunogen :	The antiserum was produced against synthesized peptide derived from human CNTD2. AA range:51-100
Specificity :	CNTD2 Polyclonal Antibody detects endogenous levels of CNTD2 protein.
Formulation :	Liquid in PBS containing 50% glycerol, 0.5% BSA and 0.02% sodium azide.
Source :	Polyclonal, Rabbit,IgG
Dilution :	IHC 1:100 - 1:300. ELISA: 1:40000.. IF 1:50-200
Purification :	The antibody was affinity-purified from rabbit antiserum by affinity-chromatography using epitope-specific immunogen.
Concentration :	1 mg/ml
Storage Stability :	-15°C to -25°C/1 year(Do not lower than -25°C)
Molecularweight :	17kD
Background :	similarity:Belongs to the cyclin family.,similarity:Contains 1 cyclin N-terminal domain.,

Function :	similarity:Belongs to the cyclin family.,similarity:Contains 1 cyclin N-terminal domain.,
Subcellular Location :	Nucleus .
Expression :	Expression is induced in lung and colon cancer cells.
Sort :	4355
Host :	Rabbit
Modifications :	Unmodified

Products Images



Immunohistochemistry analysis of paraffin-embedded human breast carcinoma, using CNTD2 Antibody. The picture on the right is blocked with the synthesized peptide.