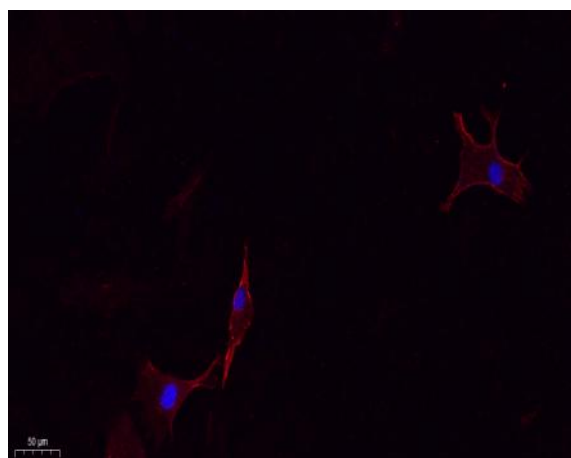


CMTM4 Polyclonal Antibody

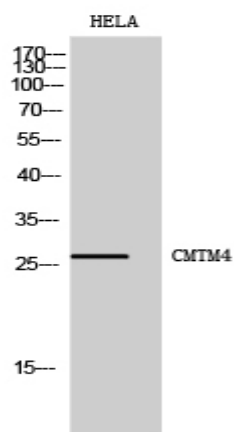
Catalog No :	YT0986
Reactivity :	Human;Mouse
Applications :	WB;IHC;IF;ELISA
Target :	CMTM4
Gene Name :	CMTM4
Protein Name :	CKLF-like MARVEL transmembrane domain-containing protein 4
Human Gene Id :	146223
Human Swiss Prot No :	Q8IZR5
Mouse Gene Id :	97487
Mouse Swiss Prot No :	Q8CJ61
Immunogen :	The antiserum was produced against synthesized peptide derived from human CKLF4. AA range:161-210
Specificity :	CMTM4 Polyclonal Antibody detects endogenous levels of CMTM4 protein.
Formulation :	Liquid in PBS containing 50% glycerol, 0.5% BSA and 0.02% sodium azide.
Source :	Polyclonal, Rabbit,IgG
Dilution :	WB 1:500 - 1:2000. IHC: 1:100-300 ELISA: 1:20000. IF 1:100-300 Not yet tested in other applications.
Purification :	The antibody was affinity-purified from rabbit antiserum by affinity-chromatography using epitope-specific immunogen.
Concentration :	1 mg/ml
Storage Stability :	-15°C to -25°C/1 year(Do not lower than -25°C)

Observed Band :	26kD
Background :	This gene belongs to the chemokine-like factor gene superfamily, a novel family that is similar to the chemokine and the transmembrane 4 superfamilies of signaling molecules. This gene is one of several chemokine-like factor genes located in a cluster on chromosome 16. Alternatively spliced transcript variants encoding different isoforms have been identified. [provided by RefSeq, Jul 2008],
Function :	similarity:Belongs to the chemokine-like factor family.,similarity:Contains 1 MARVEL domain.,tissue specificity:Highly expressed in testis and prostate.,
Subcellular Location :	Membrane ; Multi-pass membrane protein .
Expression :	Highly expressed in testis and prostate.
Tag :	orthogonal
Sort :	651
No3 :	ab254657
No4 :	1
Host :	Rabbit
Modifications :	Unmodified

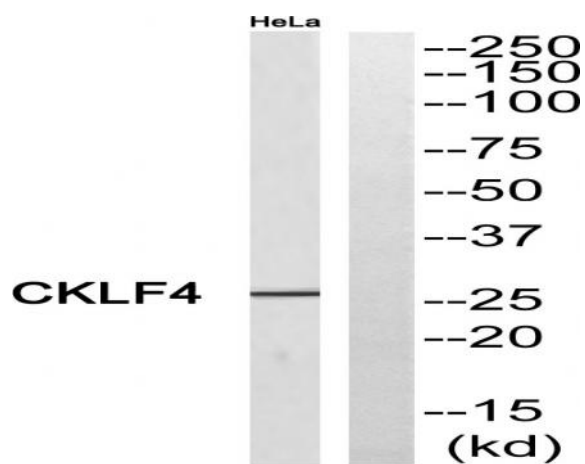
Products Images



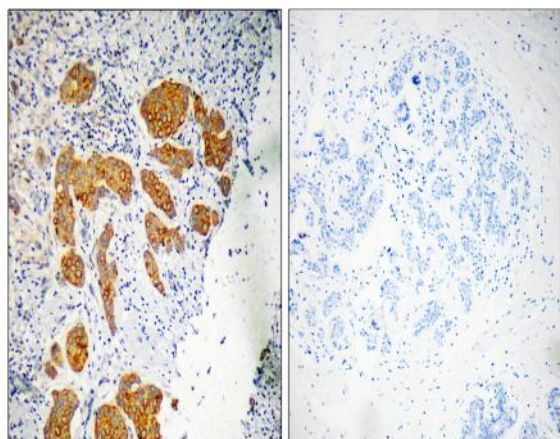
Immunofluorescence analysis of A549. 1,primary Antibody(red) was diluted at 1:200(4°C overnight). 2, Goat Anti Rabbit IgG (H&L) - Alexa Fluor 594 Secondary antibody was diluted at 1:1000(room temperature, 50min).3, Picture B: DAPI(blue) 10min.



Western Blot analysis of HELA cells using CMTM4 Polyclonal Antibody



Western blot analysis of CKLF4 Antibody. The lane on the right is blocked with the CKLF4 peptide.



Immunohistochemistry analysis of paraffin-embedded human breast carcinoma, using CKLF4 Antibody. The lane on the right is blocked with the CKLF4 peptide.