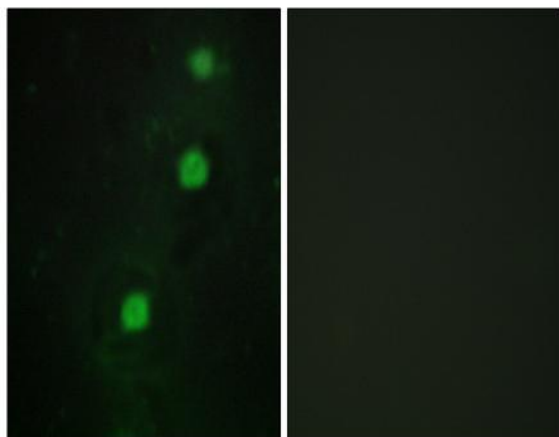


## CCRK Polyclonal Antibody

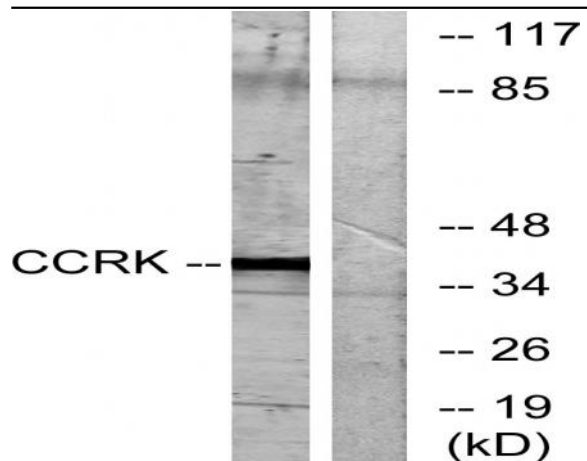
<b>Catalog No :</b>	YT0711
<b>Reactivity :</b>	Human;Mouse;Rat
<b>Applications :</b>	WB;IHC;IF;ELISA
<b>Target :</b>	CCRK
<b>Gene Name :</b>	CDK20
<b>Protein Name :</b>	Cyclin-dependent kinase 20
<b>Human Gene Id :</b>	23552
<b>Human Swiss Prot No :</b>	Q8IZL9
<b>Mouse Gene Id :</b>	105278
<b>Mouse Swiss Prot No :</b>	Q9JHU3
<b>Rat Gene Id :</b>	364666
<b>Rat Swiss Prot No :</b>	Q4KM34
<b>Immunogen :</b>	The antiserum was produced against synthesized peptide derived from human CCRK. AA range:31-80
<b>Specificity :</b>	CCRK Polyclonal Antibody detects endogenous levels of CCRK protein.
<b>Formulation :</b>	Liquid in PBS containing 50% glycerol, 0.5% BSA and 0.02% sodium azide.
<b>Source :</b>	Polyclonal, Rabbit,IgG
<b>Dilution :</b>	WB 1:500 - 1:2000. IHC 1:100 - 1:300. IF 1:200 - 1:1000. ELISA: 1:20000. Not yet tested in other applications.
<b>Purification :</b>	The antibody was affinity-purified from rabbit antiserum by affinity-chromatography using epitope-specific immunogen.

<b>Concentration :</b>	1 mg/ml
<b>Storage Stability :</b>	-15°C to -25°C/1 year(Do not lower than -25°C)
<b>Observed Band :</b>	39kD
<b>Background :</b>	The protein encoded by this gene contains a kinase domain most closely related to the cyclin-dependent protein kinases. The encoded kinase may activate cyclin-dependent kinase 2 and is involved in cell growth. Alternatively spliced transcript variants encoding distinct isoforms have been reported. [provided by RefSeq, Dec 2009],
<b>Function :</b>	similarity:Belongs to the protein kinase superfamily.,
<b>Subcellular Location :</b>	Nucleus . Cytoplasm . Cell projection, cilium .
<b>Sort :</b>	3336
<b>No4 :</b>	1

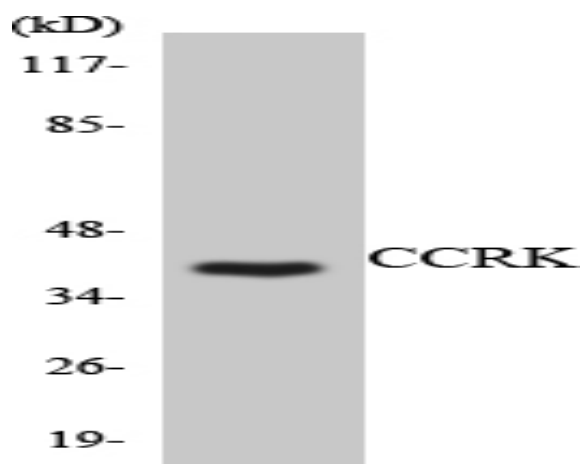
## Products Images



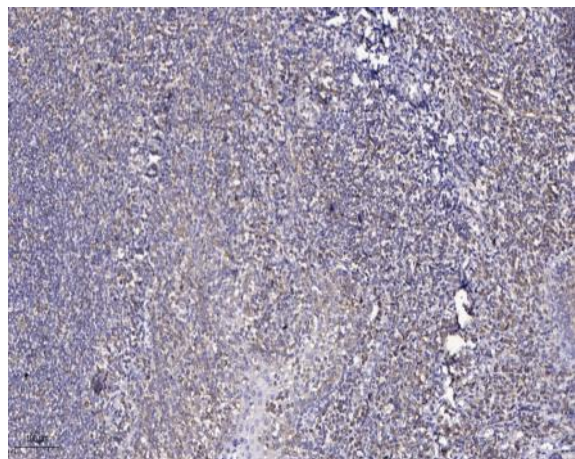
Immunofluorescence analysis of HUVEC cells, using CCRK Antibody. The picture on the right is blocked with the synthesized peptide.



Western blot analysis of lysates from RAW264.7 cells, using CCRK Antibody. The lane on the right is blocked with the synthesized peptide.



Western blot analysis of the lysates from RAW264.7 cells using CCRK antibody.



Immunohistochemical analysis of paraffin-embedded human tonsil. 1, Antibody was diluted at 1:200 (4° overnight). 2, Tris-EDTA, pH 9.0 was used for antigen retrieval. 3, Secondary antibody was diluted at 1:200 (room temperature, 45 min).