

CdcA4 Polyclonal Antibody

Catalog No :	YT0820
Reactivity :	Human;Mouse
Applications :	IHC;IF;WB;ELISA
Target :	CdcA4
Gene Name :	CDCA4
Protein Name :	Cell division cycle-associated protein 4
Human Gene Id :	55038
Human Swiss Prot No :	Q9BXL8
Mouse Gene Id :	71963
Mouse Swiss Prot No :	Q9CWM2
Immunogen :	The antiserum was produced against synthesized peptide derived from human CDCA4. AA range:121-170
Specificity :	CdcA4 Polyclonal Antibody detects endogenous levels of CdcA4 protein.
Formulation :	Liquid in PBS containing 50% glycerol, 0.5% BSA and 0.02% sodium azide.
Source :	Polyclonal, Rabbit,IgG
Dilution :	WB 1:500-2000 IHC 1:100 - 1:300. IF 1:200 - 1:1000. ELISA: 1:5000. Not yet tested in other applications.
Purification :	The antibody was affinity-purified from rabbit antiserum by affinity-chromatography using epitope-specific immunogen.
Concentration :	1 mg/ml
Storage Stability :	-15°C to -25°C/1 year(Do not lower than -25°C)

Observed Band : 26kD

Background : cell division cycle associated 4(CDCA4) Homo sapiens This gene encodes a protein that belongs to the E2F family of transcription factors. This protein regulates E2F-dependent transcriptional activation and cell proliferation, mainly through the E2F/retinoblastoma protein pathway. It also functions in the regulation of JUN oncogene expression. This protein shows distinctive nuclear-mitotic apparatus distribution, it is involved in spindle organization from prometaphase, and may also play a role as a midzone factor involved in chromosome segregation or cytokinesis. Two alternatively spliced transcript variants encoding the same protein have been noted for this gene. Two pseudogenes have also been identified on chromosome 1. [provided by RefSeq, May 2014],

Function : function:May participate in the regulation of cell proliferation through the E2F/RB pathway. May be involved in molecular regulation of hematopoietic stem cells and progenitor cell lineage commitment and differentiation.,induction:By E2F1.,similarity:Contains 1 SERTA domain.,tissue specificity:Highest levels of expression in the pancreas, thymus, testis, spleen, liver, placenta and leukocytes. Relatively low levels in the lung, kidney, prostate, ovary, small intestine and colon. Hardly detectable, if at all, in the brain, skeletal muscle and heart.,

Subcellular Location : Nucleus .

Expression : Highest levels of expression in the pancreas, thymus, testis, spleen, liver, placenta and leukocytes. Relatively low levels in the lung, kidney, prostate, ovary, small intestine and colon. Hardly detectable, if at all, in the brain, skeletal muscle and heart.

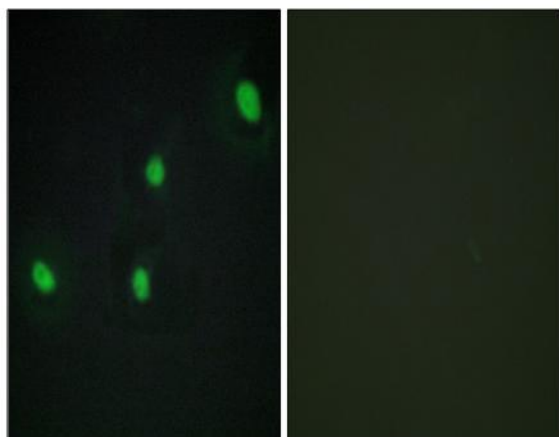
Tag : orthogonal

Sort : 3762

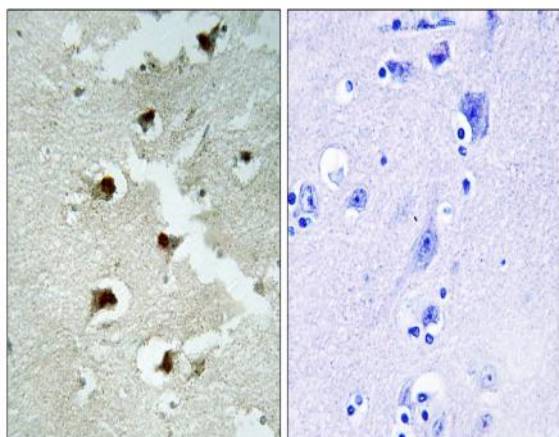
Host : Rabbit

Modifications : Unmodified

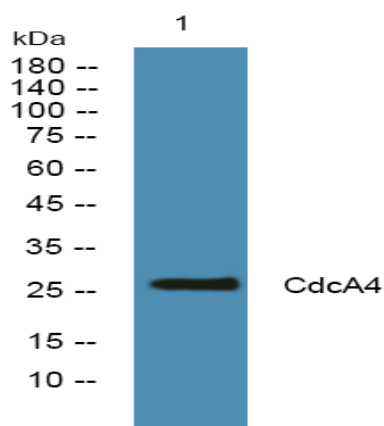
Products Images



Immunofluorescence analysis of HepG2 cells, using CDCA4 Antibody. The picture on the right is blocked with the synthesized peptide.



Immunohistochemistry analysis of paraffin-embedded human brain tissue, using CDCA4 Antibody. The picture on the right is blocked with the synthesized peptide.



Western blot analysis of lysates from A431 cells, primary antibody was diluted at 1:1000, 4° over night