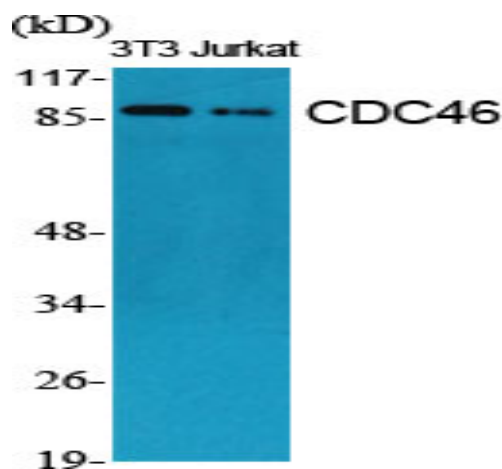


## CDC46 Polyclonal Antibody

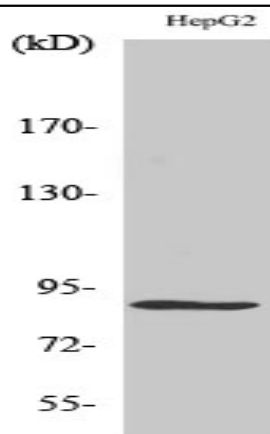
<b>Catalog No :</b>	YT0812
<b>Reactivity :</b>	Human;Mouse;Rat
<b>Applications :</b>	WB;IHC;IF;ELISA
<b>Target :</b>	CDC46
<b>Fields :</b>	>>DNA replication;>>Cell cycle
<b>Gene Name :</b>	MCM5
<b>Protein Name :</b>	DNA replication licensing factor MCM5
<b>Human Gene Id :</b>	4174
<b>Human Swiss Prot No :</b>	P33992
<b>Mouse Swiss Prot No :</b>	P49718
<b>Immunogen :</b>	The antiserum was produced against synthesized peptide derived from human MCM5. AA range:21-70
<b>Specificity :</b>	CDC46 Polyclonal Antibody detects endogenous levels of CDC46 protein.
<b>Formulation :</b>	Liquid in PBS containing 50% glycerol, 0.5% BSA and 0.02% sodium azide.
<b>Source :</b>	Polyclonal, Rabbit,IgG
<b>Dilution :</b>	WB 1:500 - 1:2000. IHC 1:100 - 1:300. IF 1:200 - 1:1000. ELISA: 1:20000. Not yet tested in other applications.
<b>Purification :</b>	The antibody was affinity-purified from rabbit antiserum by affinity-chromatography using epitope-specific immunogen.
<b>Concentration :</b>	1 mg/ml
<b>Storage Stability :</b>	-15°C to -25°C/1 year(Do not lower than -25°C)

<b>Observed Band :</b>	90kD
<b>Cell Pathway :</b>	DNA replication;Cell_Cycle_G1S;Cell_Cycle_G2M_DNA;
<b>Background :</b>	The protein encoded by this gene is structurally very similar to the CDC46 protein from <i>S. cerevisiae</i> , a protein involved in the initiation of DNA replication. The encoded protein is a member of the MCM family of chromatin-binding proteins and can interact with at least two other members of this family. The encoded protein is upregulated in the transition from the G0 to G1/S phase of the cell cycle and may actively participate in cell cycle regulation. [provided by RefSeq, Jul 2008],
<b>Function :</b>	similarity:Belongs to the MCM family.,similarity:Contains 1 MCM domain.,
<b>Subcellular Location :</b>	Nucleus . Chromosome . Cytoplasm, cytosol . Associated with chromatin before the formation of nuclei and detaches from it as DNA replication progresses. .
<b>Expression :</b>	Cervix,Cervix carcinoma,Lymph,Placenta,Spleen,Thymus,Tongue
<b>Sort :</b>	3753
<b>No4 :</b>	1
<b>Host :</b>	Rabbit
<b>Modifications :</b>	Unmodified

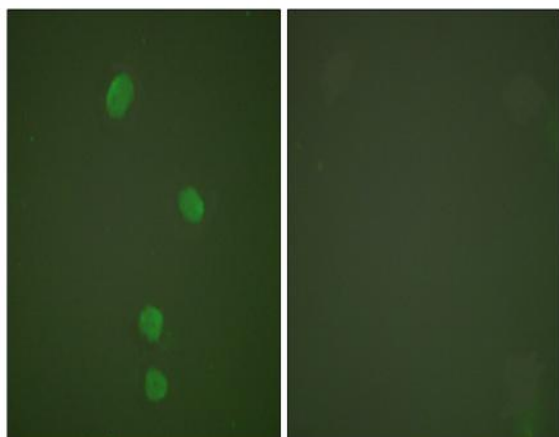
## Products Images



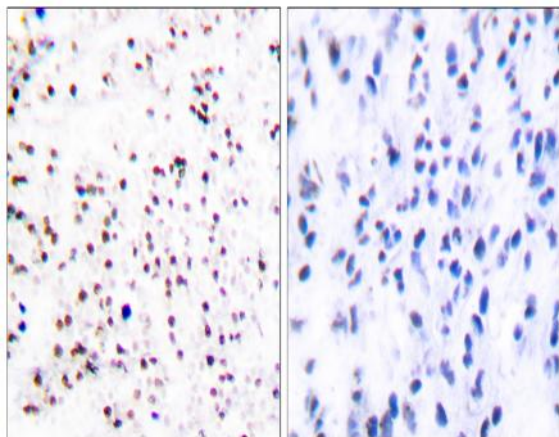
Western Blot analysis of various cells using CDC46 Polyclonal Antibody cells nucleus extracted by Minute TM Cytoplasmic and Nuclear Fractionation kit (SC-003, Inventbiotech, MN, USA).



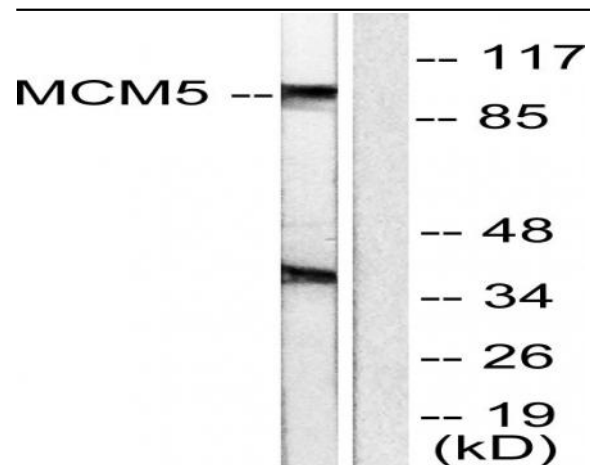
Western Blot analysis of HepG2 cells using CDC46 Polyclonal Antibody cells nucleus extracted by Minute TM Cytoplasmic and Nuclear Fractionation kit (SC-003, Inventbiotech, MN, USA).



Immunofluorescence analysis of HepG2 cells, using MCM5 Antibody. The picture on the right is blocked with the synthesized peptide.



Immunohistochemistry analysis of paraffin-embedded human tonsil tissue, using MCM5 Antibody. The picture on the right is blocked with the synthesized peptide.



Western blot analysis of lysates from HepG2 cells, using MCM5 Antibody. The lane on the right is blocked with the synthesized peptide.