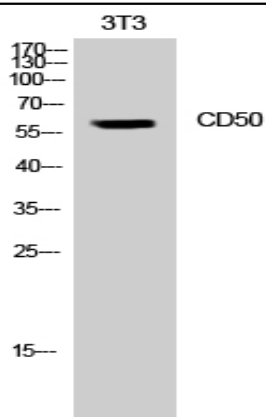


CD50 Polyclonal Antibody

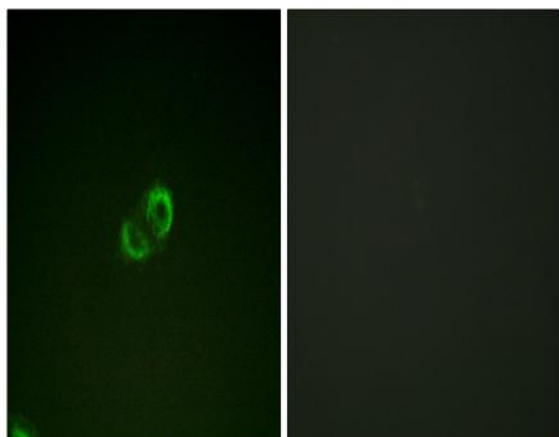
Catalog No :	YT0767
Reactivity :	Human;Rat;Mouse;
Applications :	WB;IF;ELISA
Target :	CD50/ICAM-3
Fields :	>>Cell adhesion molecules
Gene Name :	ICAM3
Protein Name :	Intercellular adhesion molecule 3
Human Gene Id :	3385
Human Swiss Prot No :	P32942
Immunogen :	The antiserum was produced against synthesized peptide derived from human CD50/ICAM-3. AA range:484-533
Specificity :	CD50 Polyclonal Antibody detects endogenous levels of CD50 protein.
Formulation :	Liquid in PBS containing 50% glycerol, 0.5% BSA and 0.02% sodium azide.
Source :	Polyclonal, Rabbit,IgG
Dilution :	WB 1:500 - 1:2000. IF 1:200 - 1:1000. ELISA: 1:5000. Not yet tested in other applications.
Purification :	The antibody was affinity-purified from rabbit antiserum by affinity-chromatography using epitope-specific immunogen.
Concentration :	1 mg/ml
Storage Stability :	-15°C to -25°C/1 year(Do not lower than -25°C)
Observed Band :	42-60kD

Cell Pathway :	Cell adhesion molecules (CAMs);
Background :	<p>The protein encoded by this gene is a member of the intercellular adhesion molecule (ICAM) family. All ICAM proteins are type I transmembrane glycoproteins, contain 2-9 immunoglobulin-like C2-type domains, and bind to the leukocyte adhesion LFA-1 protein. This protein is constitutively and abundantly expressed by all leucocytes and may be the most important ligand for LFA-1 in the initiation of the immune response. It functions not only as an adhesion molecule, but also as a potent signalling molecule. Alternative splicing results in multiple transcript variants encoding different isoforms. [provided by RefSeq, Feb 2016],</p>
Function :	<p>function:ICAM proteins are ligands for the leukocyte adhesion protein LFA-1 (integrin alpha-L/beta-2). ICAM3 is also a ligand for integrin alpha-D/beta-2.,online information:ICAM-3,PTM:N-glycosylated; glycans consist of a mixture of tri- and tetra-antennary complex-type chains and high-mannose chains.,PTM:Upon stimulation by a physiologic stimuli becomes rapidly and transiently phosphorylated on serine residues.,similarity:Belongs to the immunoglobulin superfamily. ICAM family.,similarity:Contains 5 Ig-like C2-type (immunoglobulin-like) domains.,</p>
Subcellular Location :	Membrane; Single-pass type I membrane protein.
Expression :	Leukocytes.
Tag :	orthogonal,hot
Sort :	3604
No4 :	1
Host :	Rabbit
Modifications :	Unmodified

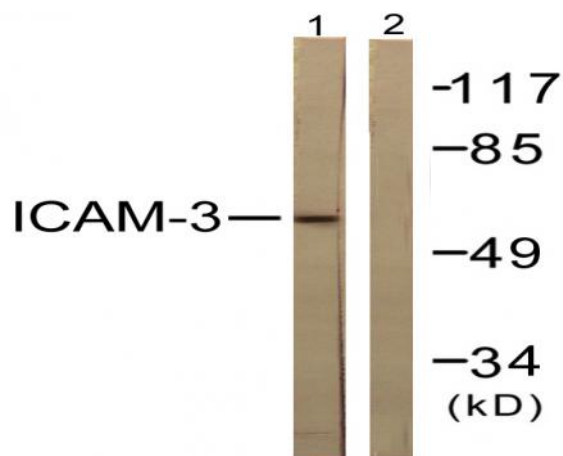
Products Images



Western Blot analysis of NIH-3T3 cells using CD50 Polyclonal Antibody



Immunofluorescence analysis of A549 cells, using CD50/ICAM-3 Antibody. The picture on the right is blocked with the synthesized peptide.



Western blot analysis of lysates from NIH/3T3 cells, treated with TNF- α 20ng/ml 5', using CD50/ICAM-3 Antibody. The lane on the right is blocked with the synthesized peptide.