

## C1orf181 Polyclonal Antibody

<b>Catalog No :</b>	YT0562
<b>Reactivity :</b>	Human;Mouse
<b>Applications :</b>	WB;IHC;IF;ELISA
<b>Target :</b>	C1orf181
<b>Gene Name :</b>	ZNHIT6
<b>Protein Name :</b>	Box C/D snoRNA protein 1
<b>Human Gene Id :</b>	54680
<b>Human Swiss Prot No :</b>	Q9NWK9
<b>Mouse Gene Id :</b>	229937
<b>Mouse Swiss Prot No :</b>	Q3UFB2
<b>Immunogen :</b>	The antiserum was produced against synthesized peptide derived from human CA181. AA range:301-350
<b>Specificity :</b>	C1orf181 Polyclonal Antibody detects endogenous levels of C1orf181 protein.
<b>Formulation :</b>	Liquid in PBS containing 50% glycerol, 0.5% BSA and 0.02% sodium azide.
<b>Source :</b>	Polyclonal, Rabbit,IgG
<b>Dilution :</b>	WB 1:500 - 1:2000. ELISA: 1:5000.. IF 1:50-200
<b>Purification :</b>	The antibody was affinity-purified from rabbit antiserum by affinity-chromatography using epitope-specific immunogen.
<b>Concentration :</b>	1 mg/ml
<b>Storage Stability :</b>	-15°C to -25°C/1 year(Do not lower than -25°C)

**Observed Band :** 54kD

**Background :** ZNHIT6 (Zinc Finger HIT-Type Containing 6) is a Protein Coding gene. GO annotations related to this gene include identical protein binding and enzyme binding.

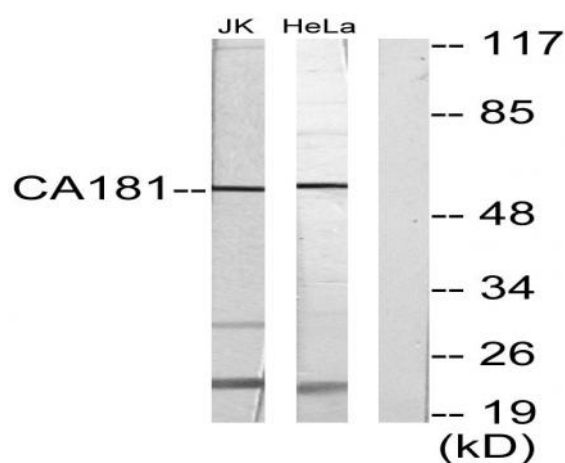
**Function :** small nucleolar ribonucleoprotein complex assembly, box C/D snoRNP assembly, ribonucleoprotein complex biogenesis, ribonucleoprotein complex assembly, cellular macromolecular complex subunit organization, cellular macromolecular complex assembly, macromolecular complex subunit organization, macromolecular complex assembly,

**Subcellular Location :** extracellular exosome, pre-snoRNP complex,

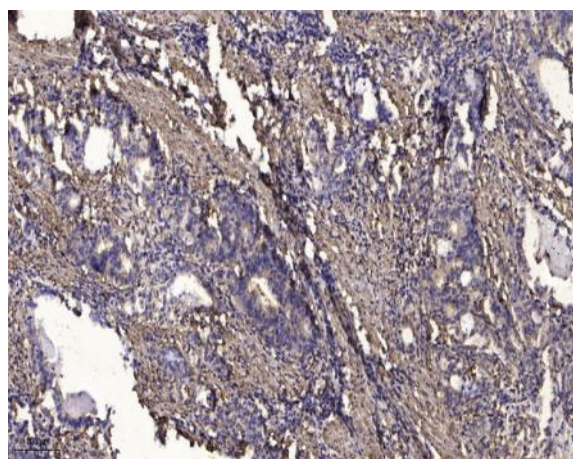
**Sort :** 2934

**No4 :** 1

## Products Images



Western blot analysis of lysates from Jurkat and HeLa cells, using CA181 Antibody. The lane on the right is blocked with the synthesized peptide.



Immunohistochemical analysis of paraffin-embedded human Gastric adenocarcinoma. 1, Antibody was diluted at 1:200(4° overnight). 2, Tris-EDTA, pH9.0 was used for antigen retrieval. 3, Secondary antibody was diluted at 1:200(room temperature, 45min).