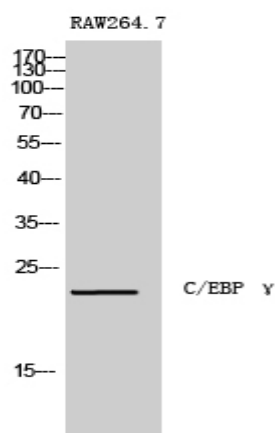


C/EBP γ Polyclonal Antibody

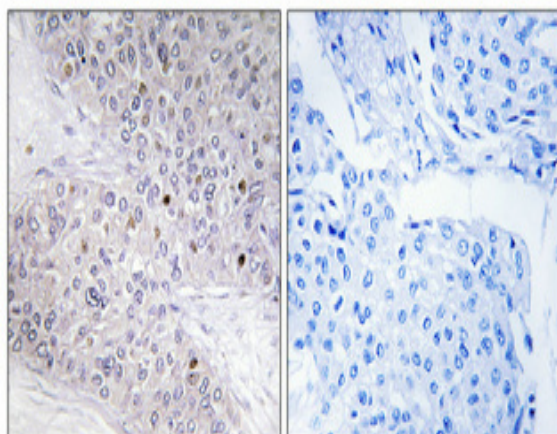
Catalog No :	YT0555
Reactivity :	Human;Mouse;Rat
Applications :	WB;IHC;IF;ELISA
Target :	C/EBP γ
Fields :	>>Tuberculosis
Gene Name :	CEBPG
Protein Name :	CCAAT/enhancer-binding protein gamma
Human Gene Id :	1054
Human Swiss Prot No :	P53567
Mouse Gene Id :	12611
Mouse Swiss Prot No :	P53568
Rat Gene Id :	25301
Rat Swiss Prot No :	P26801
Immunogen :	The antiserum was produced against synthesized peptide derived from human CEBPG. AA range:31-80
Specificity :	C/EBP γ Polyclonal Antibody detects endogenous levels of C/EBP γ protein.
Formulation :	Liquid in PBS containing 50% glycerol, 0.5% BSA and 0.02% sodium azide.
Source :	Polyclonal, Rabbit,IgG
Dilution :	WB 1:500 - 1:2000. IHC 1:100 - 1:300. IF 1:200 - 1:1000. ELISA: 1:20000. Not yet tested in other applications.

Purification :	The antibody was affinity-purified from rabbit antiserum by affinity-chromatography using epitope-specific immunogen.
Concentration :	1 mg/ml
Storage Stability :	-15°C to -25°C/1 year(Do not lower than -25°C)
Observed Band :	22kD
Background :	The C/EBP family of transcription factors regulates viral and cellular CCAAT/enhancer element-mediated transcription. C/EBP proteins contain the bZIP region, which is characterized by two motifs in the C-terminal half of the protein: a basic region involved in DNA binding and a leucine zipper motif involved in dimerization. The C/EBP family consist of several related proteins, C/EBP alpha, C/EBP beta, C/EBP gamma, and C/EBP delta, that form homodimers and that form heterodimers with each other. CCAAT/enhancer binding protein gamma may cooperate with Fos to bind PRE-I enhancer elements. Two transcript variants encoding the same protein have been found for this gene. [provided by RefSeq, Nov 2011],
Function :	function:Transcription factor that binds to the enhancer element PRE-I (positive regulatory element-I) of the IL-4 gene. Might change the DNA-binding specificity of other transcription factors and recruit them to unusual DNA sites.,similarity:Belongs to the bZIP family. C/EBP subfamily.,similarity:Contains 1 bZIP domain.,subunit:Binds DNA as a dimer and can form stable heterodimers with C/EBP alpha and beta and with Fos protein.,
Subcellular Location :	Nucleus .
Expression :	Placenta,T-cell,Trachea,
Sort :	2919
No4 :	1

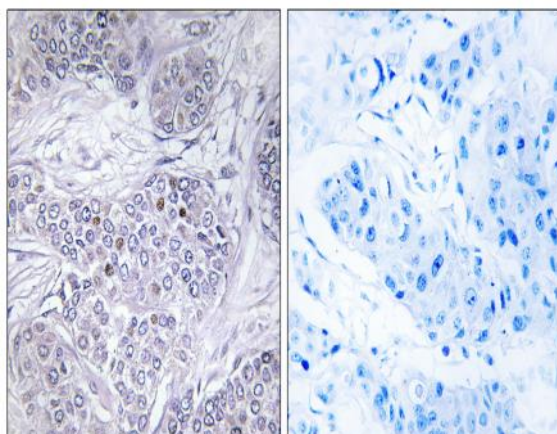
Products Images



Western Blot analysis of RAW264.7 cells using C/EBP γ Polyclonal Antibody cells nucleus extracted by Minute TM Cytoplasmic and Nuclear Fractionation kit (SC-003, Inventbiotech, MN, USA).



Immunohistochemical analysis of paraffin-embedded Human breast cancer. Antibody was diluted at 1:100 (4° overnight). High-pressure and temperature Tris-EDTA, pH 8.0 was used for antigen retrieval. Negative control (right) obtained from antibody was pre-absorbed by immunogen peptide.



Immunohistochemistry analysis of paraffin-embedded human breast carcinoma tissue, using CEBPG Antibody. The picture on the right is blocked with the synthesized peptide.

