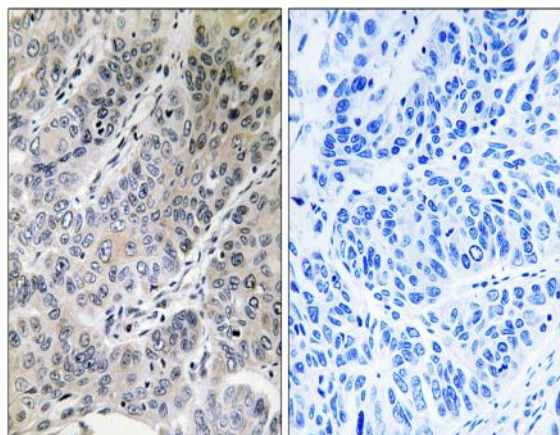


Brp44 Polyclonal Antibody

Catalog No :	YT0531
Reactivity :	Human;Mouse;Rat
Applications :	IHC;IF;ELISA
Target :	Brp44
Fields :	>>Diabetic cardiomyopathy
Gene Name :	MPC2
Protein Name :	Mitochondrial pyruvate carrier 2
Human Gene Id :	25874
Human Swiss Prot No :	O95563
Mouse Gene Id :	70456
Mouse Swiss Prot No :	Q9D023
Rat Gene Id :	1.0036e+008
Rat Swiss Prot No :	P38718
Immunogen :	The antiserum was produced against synthesized peptide derived from human BRP44. AA range:31-80
Specificity :	Brp44 Polyclonal Antibody detects endogenous levels of Brp44 protein.
Formulation :	Liquid in PBS containing 50% glycerol, 0.5% BSA and 0.02% sodium azide.
Source :	Polyclonal, Rabbit,IgG
Dilution :	IHC 1:100 - 1:300. ELISA: 1:40000.. IF 1:50-200

Purification :	The antibody was affinity-purified from rabbit antiserum by affinity-chromatography using epitope-specific immunogen.
Concentration :	1 mg/ml
Storage Stability :	-15°C to -25°C/1 year(Do not lower than -25°C)
Molecularweight :	14kD
Background :	similarity:Belongs to the UPF0041 (0-44) family.,
Function :	similarity:Belongs to the UPF0041 (0-44) family.,
Subcellular Location :	Mitochondrion inner membrane ; Multi-pass membrane protein .
Expression :	Brain,Thalamus,
Sort :	2875
No4 :	1

Products Images



Immunohistochemistry analysis of paraffin-embedded human lung carcinoma tissue, using BRP44 Antibody. The picture on the right is blocked with the synthesized peptide.