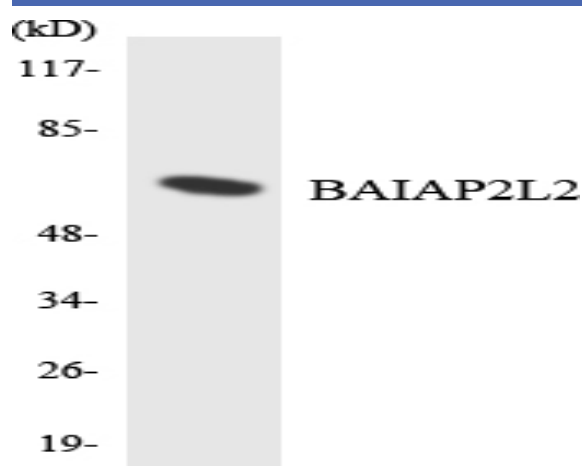


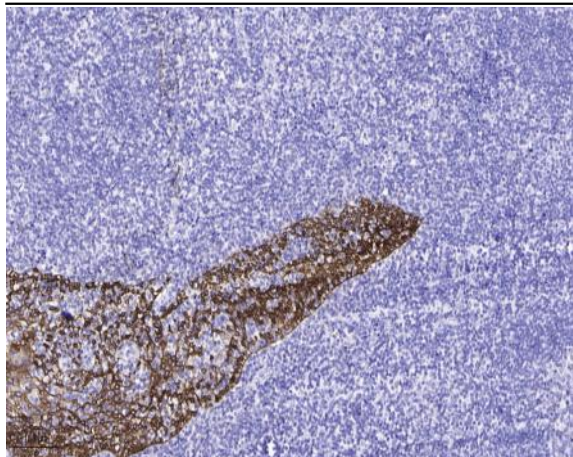
BAIAP2L2 Polyclonal Antibody

Catalog No :	YT0448
Reactivity :	Human;Mouse
Applications :	WB;IHC;IF;ELISA
Target :	BAIAP2L2
Gene Name :	BAIAP2L2
Protein Name :	Brain-specific angiogenesis inhibitor 1-associated protein 2-like protein 2
Human Gene Id :	80115
Human Swiss Prot No :	Q6UXY1
Mouse Gene Id :	207495
Mouse Swiss Prot No :	Q80Y61
Immunogen :	The antiserum was produced against synthesized peptide derived from human BAIAP2L2. AA range:111-160
Specificity :	BAIAP2L2 Polyclonal Antibody detects endogenous levels of BAIAP2L2 protein.
Formulation :	Liquid in PBS containing 50% glycerol, 0.5% BSA and 0.02% sodium azide.
Source :	Polyclonal, Rabbit,IgG
Dilution :	WB 1:500 - 1:2000. IHC 1:100 - 1:300. ELISA: 1:40000.. IF 1:50-200
Purification :	The antibody was affinity-purified from rabbit antiserum by affinity-chromatography using epitope-specific immunogen.
Concentration :	1 mg/ml
Storage Stability :	-15°C to -25°C/1 year(Do not lower than -25°C)

Observed Band :	52kD
Background :	The protein encoded by this gene binds phosphoinositides and promotes the formation of planar or curved membrane structures. The encoded protein is found in RAB13-positive vesicles and at intercellular contacts with the plasma membrane. [provided by RefSeq, Dec 2012],
Function :	domain:The IMD domain is predicted to have a helical structure. It may induce actin bundling and filopodia formation.,function:May function as an adapter protein .,similarity:Contains 1 IMD (IRSp53/MIM homology) domain.,similarity:Contains 1 SH3 domain.,
Subcellular Location :	Cell membrane ; Peripheral membrane protein . Cell junction . Cytoplasmic vesicle membrane . Localizes to RAB13-positive vesicles and to the plasma membrane at intercellular contacts.
Expression :	Expressed in the epithelial layer of the intestine (at protein level).
Tag :	hot
Sort :	2582
No4 :	1

Products Images





Immunohistochemical analysis of paraffin-embedded human tonsil. 1, Antibody was diluted at 1:200(4 ° overnight). 2, Tris-EDTA,pH9.0 was used for antigen retrieval. 3,Secondary antibody was diluted at 1:200(room temperature, 45min).