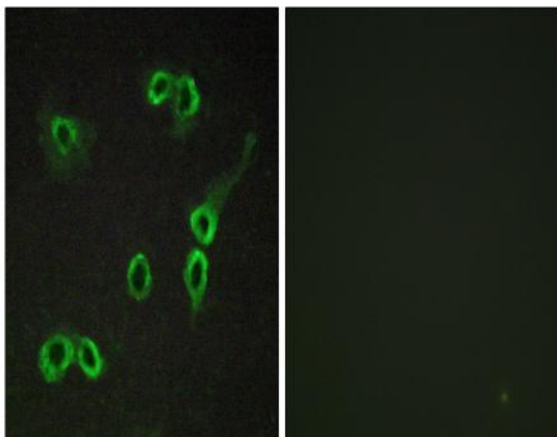


C3aR Polyclonal Antibody

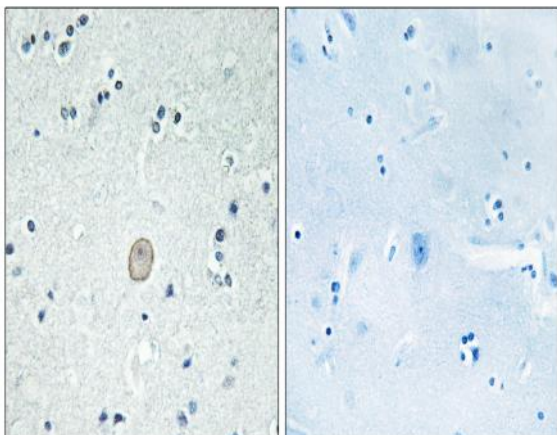
Catalog No :	YT0568
Reactivity :	Human;Rat;Mouse;
Applications :	IHC;IF;ELISA
Target :	C3aR
Fields :	>>Neuroactive ligand-receptor interaction;>>Complement and coagulation cascades;>>Alcoholic liver disease;>>Staphylococcus aureus infection;>>Coronavirus disease - COVID-19
Gene Name :	C3AR1
Protein Name :	C3a anaphylatoxin chemotactic receptor
Human Gene Id :	719
Human Swiss Prot No :	Q16581
Mouse Swiss Prot No :	O09047
Immunogen :	The antiserum was produced against synthesized peptide derived from human C3AR1. AA range:175-224
Specificity :	C3aR Polyclonal Antibody detects endogenous levels of C3aR protein.
Formulation :	Liquid in PBS containing 50% glycerol, 0.5% BSA and 0.02% sodium azide.
Source :	Polyclonal, Rabbit,IgG
Dilution :	IHC 1:100 - 1:300. IF 1:200 - 1:1000. ELISA: 1:10000. Not yet tested in other applications.
Purification :	The antibody was affinity-purified from rabbit antiserum by affinity-chromatography using epitope-specific immunogen.
Concentration :	1 mg/ml

Storage Stability :	-15 °C to -25 °C/1 year(Do not lower than -25 °C)
Molecularweight :	54kD
Cell Pathway :	Neuroactive ligand-receptor interaction;Complement and coagulation cascades;
Background :	C3a is an anaphylatoxin released during activation of the complement system. The protein encoded by this gene is an orphan G protein-coupled receptor for C3a. Binding of C3a by the encoded receptor activates chemotaxis, granule enzyme release, superoxide anion production, and bacterial opsonization. [provided by RefSeq, May 2016],
Function :	function:Receptor for the chemotactic and inflammatory peptide anaphylatoxin C3a. This receptor stimulates chemotaxis, granule enzyme release and superoxide anion production.,PTM:Among the sulfation sites Tyr-174 is essential for binding of C3a anaphylatoxin.,similarity:Belongs to the G-protein coupled receptor 1 family.,tissue specificity:Widely expressed in several differentiated hematopoietic cell lines, in the lung, spleen, ovary, placenta, small intestine, throughout the brain, heart, and endothelial cells. Mostly expressed in lymphoid tissues.,
Subcellular Location :	Cell membrane; Multi-pass membrane protein.
Expression :	Widely expressed in several differentiated hematopoietic cell lines, in the lung, spleen, ovary, placenta, small intestine, throughout the brain, heart, and endothelial cells. Mostly expressed in lymphoid tissues.
Tag :	hot
Sort :	1
No4 :	1
Host :	Rabbit
Modifications :	Unmodified

Products Images



Immunofluorescence analysis of COS7 cells, using C3AR1 Antibody. The picture on the right is blocked with the synthesized peptide.



Immunohistochemistry analysis of paraffin-embedded human brain tissue, using C3AR1 Antibody. The picture on the right is blocked with the synthesized peptide.