

Asf1a Polyclonal Antibody

Catalog No :	YT0368
Reactivity :	Human;Mouse
Applications :	WB;IF;ELISA
Target :	Asf1a
Gene Name :	ASF1A
Protein Name :	Histone chaperone ASF1A
Human Gene Id :	25842
Human Swiss Prot No :	Q9Y294
Mouse Gene Id :	66403
Mouse Swiss Prot No :	Q9CQE6
Immunogen :	The antiserum was produced against synthesized peptide derived from human ASF1A. AA range:121-170
Specificity :	Asf1a Polyclonal Antibody detects endogenous levels of Asf1a protein.
Formulation :	Liquid in PBS containing 50% glycerol, 0.5% BSA and 0.02% sodium azide.
Source :	Polyclonal, Rabbit,IgG
Dilution :	WB 1:500 - 1:2000. IF 1:200 - 1:1000. ELISA: 1:20000. Not yet tested in other applications.
Purification :	The antibody was affinity-purified from rabbit antiserum by affinity-chromatography using epitope-specific immunogen.
Concentration :	1 mg/ml
Storage Stability :	-15°C to -25°C/1 year(Do not lower than -25°C)

Observed Band : 23kD

Background : This gene encodes a member of the H3/H4 family of histone chaperone proteins and is similar to the anti-silencing function-1 gene in yeast. The protein is a key component of a histone donor complex that functions in nucleosome assembly. It interacts with histones H3 and H4, and functions together with a chromatin assembly factor during DNA replication and repair. [provided by RefSeq, Jul 2008],

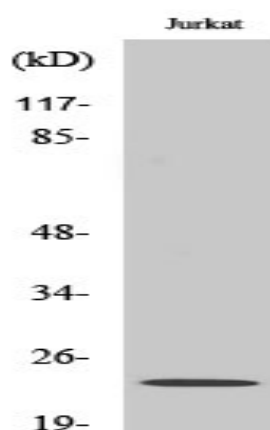
Function : function:Histone chaperone that facilitates histone deposition and histone exchange and removal during nucleosome assembly and disassembly. Cooperates with chromatin assembly factor 1 (CAF-1) to promote replication-dependent chromatin assembly and with HIRA to promote replication-independent chromatin assembly. Required for the formation of senescence-associated heterochromatin foci (SAHF) and efficient senescence-associated cell cycle exit.,PTM:Phosphorylated by TLK1 and TLK2. Highly phosphorylated in S-phase and at lower levels in M-phase.,similarity:Belongs to the ASF1 family.,subunit:Interacts with histone H3 (including both histone H3.1 and H3.3) and histone H4. Interacts with the CHAF1A, CHAF1B and RBBP4 subunits of the CAF-1 complex. Interacts with CABIN1, HAT1, HIRA, NASP, TAF1, TLK1, TLK2 and UBN1.,tissue specificity:Ubiquitously expressed.,

Subcellular Location : Nucleus .

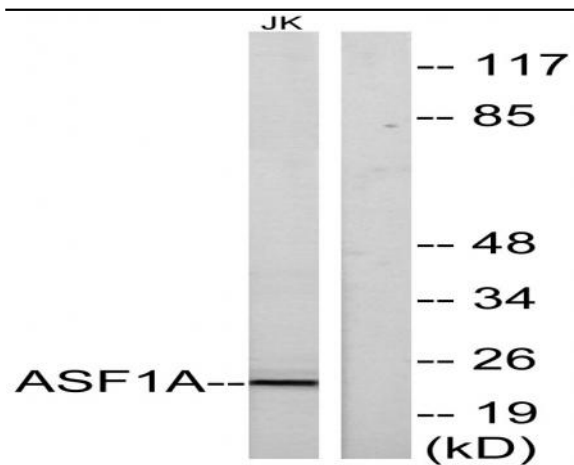
Expression : Ubiquitously expressed.

Sort : 2319

Products Images



Western Blot analysis of various cells using Asf1a Polyclonal Antibody cells nucleus extracted by Minute TM Cytoplasmic and Nuclear Fractionation kit (SC-003, Invent biotech, MN, USA).



Western blot analysis of lysates from Jurkat cells, using ASF1A Antibody. The lane on the right is blocked with the synthesized peptide.