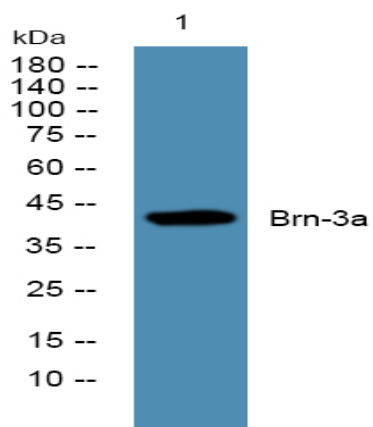


Brn-3a Polyclonal Antibody

Catalog No :	YT0529
Reactivity :	Human;Mouse;Rat
Applications :	WB;ELISA
Target :	Brn-3a
Gene Name :	POU4F1
Protein Name :	POU domain class 4 transcription factor 1
Human Gene Id :	5457
Human Swiss Prot No :	Q01851
Mouse Gene Id :	18996
Mouse Swiss Prot No :	P17208
Rat Swiss Prot No :	P20266
Immunogen :	The antiserum was produced against synthesized peptide derived from human POU4F1. AA range:311-360
Specificity :	Brn-3a Polyclonal Antibody detects endogenous levels of Brn-3a protein.
Formulation :	Liquid in PBS containing 50% glycerol, 0.5% BSA and 0.02% sodium azide.
Source :	Polyclonal, Rabbit,IgG
Dilution :	WB 1:500 - 1:2000. ELISA: 1:5000. Not yet tested in other applications.
Purification :	The antibody was affinity-purified from rabbit antiserum by affinity-chromatography using epitope-specific immunogen.
Concentration :	1 mg/ml

Storage Stability :	-15 °C to -25 °C/1 year(Do not lower than -25 °C)
Observed Band :	42kD
Background :	This gene encodes a member of the POU-IV class of neural transcription factors. This protein is expressed in a subset of retinal ganglion cells and may be involved in the developing sensory nervous system. This protein may also promote the growth of cervical tumors. A translocation of this gene is associated with some adult acute myeloid leukemias. [provided by RefSeq, Mar 2012],
Function :	developmental stage:Expression peaks early in embryogenesis (day 13.5) and is undetectable 14 days after birth.,function:Probable transcription factor which may play a role in the regulation of specific gene expression within a subset of neuronal lineages. May play a role in determining or maintaining the identities of a small subset of visual system neurons.,similarity:Belongs to the POU transcription factor family. Class-4 subfamily.,similarity:Contains 1 homeobox DNA-binding domain.,similarity:Contains 1 POU-specific domain.,tissue specificity:Brain. Seems to be specific to the retina. Present in the developing brain, spinal cord and eye.,
Subcellular Location :	Nucleus . Cytoplasm .
Expression :	Expressed in the brain and the retina. Present in the developing brain, spinal cord and eye.
Sort :	2873
No4 :	1
Host :	Rabbit
Modifications :	Unmodified

Products Images



Western blot analysis of lysates from SW480 cells, primary antibody was diluted at 1:1000, 4° over night