

ARPP-21 Polyclonal Antibody

Catalog No :	YT0337
Reactivity :	Human;Mouse
Applications :	WB;IHC;IF;ELISA
Target :	ARPP-21
Gene Name :	ARPP21
Protein Name :	cAMP-regulated phosphoprotein 21
Human Gene Id :	10777
Human Swiss Prot No :	Q9UBL0
Mouse Gene Id :	74100
Mouse Swiss Prot No :	Q9DCB4
Immunogen :	The antiserum was produced against synthesized peptide derived from human ARPP21. AA range:211-260
Specificity :	ARPP-21 Polyclonal Antibody detects endogenous levels of ARPP-21 protein.
Formulation :	Liquid in PBS containing 50% glycerol, 0.5% BSA and 0.02% sodium azide.
Source :	Polyclonal, Rabbit,IgG
Dilution :	WB 1:500 - 1:2000. IHC 1:100 - 1:300. ELISA: 1:5000.. IF 1:50-200
Purification :	The antibody was affinity-purified from rabbit antiserum by affinity-chromatography using epitope-specific immunogen.
Concentration :	1 mg/ml
Storage Stability :	-15°C to -25°C/1 year(Do not lower than -25°C)

Observed Band : 80kD

Background : This gene encodes a cAMP-regulated phosphoprotein. The encoded protein is enriched in the caudate nucleus and cerebellar cortex. A similar protein in mouse may be involved in regulating the effects of dopamine in the basal ganglia. Alternate splicing results in multiple transcript variants. [provided by RefSeq, Jun 2012],

Function : function:Isoform 2 may act as a competitive inhibitor of calmodulin-dependent enzymes such as calcineurin in neurons.,PTM:Isoform 1 is methylated by CARM1 in immature thymocytes.,PTM:Phosphorylation at Ser-56 favors interaction with CALM1.,similarity:Contains 1 R3H domain.,subunit:Interacts with CALM1.,tissue specificity:Isoform 2 is expressed in brain. Isoform 1 is present in immature thymocytes (at protein level).,

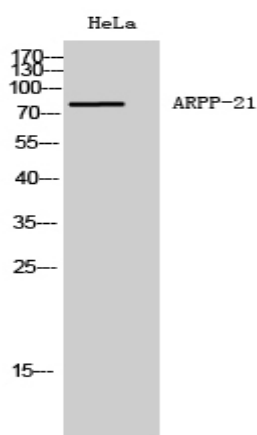
Subcellular Location : Cytoplasm .

Expression : Isoform 2 is expressed in brain. Isoform 1 is present in immature thymocytes (at protein level).

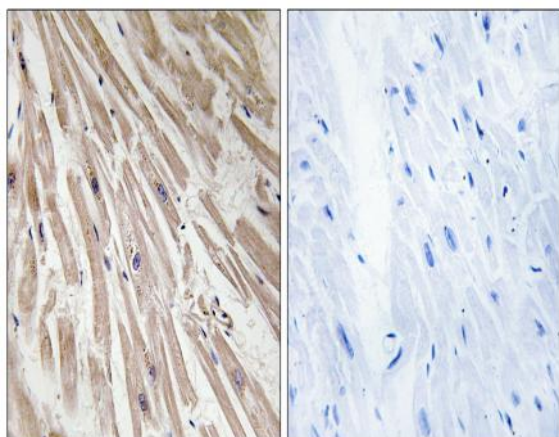
Sort : 2274

No4 : 1

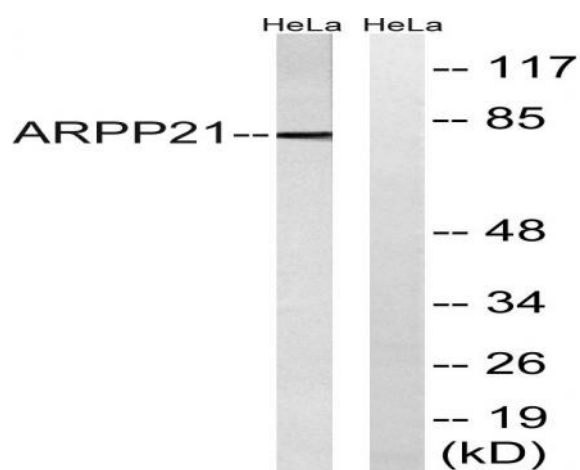
Products Images



Western Blot analysis of HeLa cells using ARPP-21 Polyclonal Antibody diluted at 1:1000



Immunohistochemistry analysis of paraffin-embedded human heart tissue, using ARPP21 Antibody. The picture on the right is blocked with the synthesized peptide.



Western blot analysis of lysates from HeLa cells, using ARPP21 Antibody. The lane on the right is blocked with the synthesized peptide.