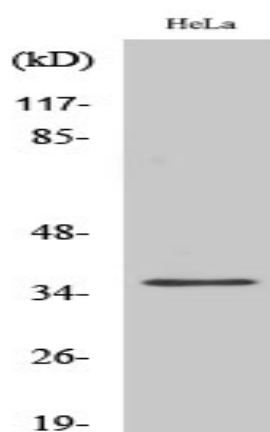


Annexin X Polyclonal Antibody

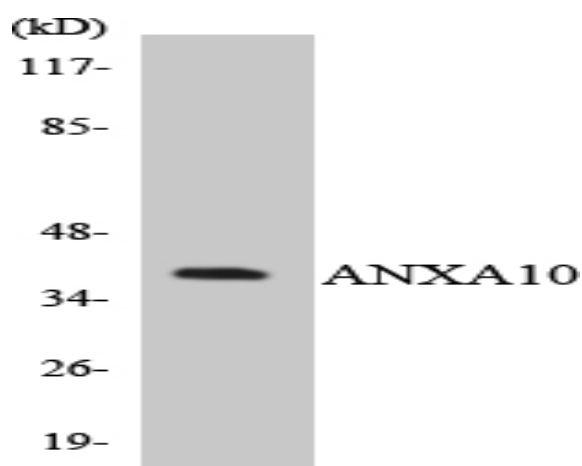
Catalog No :	YT0239
Reactivity :	Human;Mouse
Applications :	WB;ELISA
Target :	Annexin X
Gene Name :	ANXA10
Protein Name :	Annexin A10
Human Gene Id :	11199
Human Swiss Prot No :	Q9UJ72
Mouse Gene Id :	26359
Mouse Swiss Prot No :	Q9QZ10
Immunogen :	The antiserum was produced against synthesized peptide derived from human ANXA10. AA range:261-310
Specificity :	Annexin X Polyclonal Antibody detects endogenous levels of Annexin X protein.
Formulation :	Liquid in PBS containing 50% glycerol, 0.5% BSA and 0.02% sodium azide.
Source :	Polyclonal, Rabbit,IgG
Dilution :	WB 1:500 - 1:2000. ELISA: 1:20000. Not yet tested in other applications.
Purification :	The antibody was affinity-purified from rabbit antiserum by affinity-chromatography using epitope-specific immunogen.
Concentration :	1 mg/ml
Storage Stability :	-15°C to -25°C/1 year(Do not lower than -25°C)

Observed Band :	38kD
Background :	This gene encodes a member of the annexin family. Members of this calcium-dependent phospholipid-binding protein family play a role in the regulation of cellular growth and in signal transduction pathways. The function of this gene has not yet been determined. [provided by RefSeq, Jul 2008],
Function :	similarity:Belongs to the annexin family.,similarity:Contains 4 annexin repeats.,
Subcellular Location :	mitochondrion,
Expression :	Colon,Lung,
Sort :	2057
No4 :	1

Products Images



Western Blot analysis of various cells using Annexin X Polyclonal Antibody



Western blot analysis of the lysates from Jurkat cells using ANXA10 antibody.